



# Smart, Secure, and Centralized Access Control for City Governments

Manage municipal buildings, public facilities, and government offices with a scalable, cloud-based access control solution that ensures safety, transparency, and compliance.



# Managing security across a diverse portfolio of public facilities is inherently complex.

Every local government is responsible for a wide range of buildings, each with unique access needs and security requirements. A one-size-fits-all approach is no longer viable.



City Hall



Police and Fire Departments



Libraries



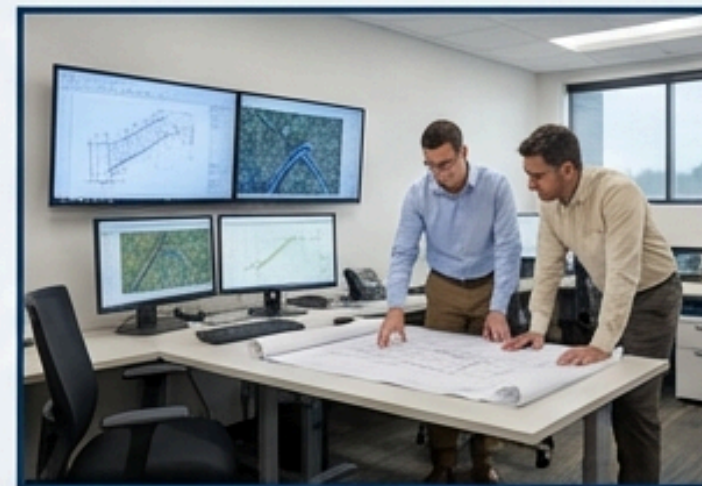
Recreation Centers



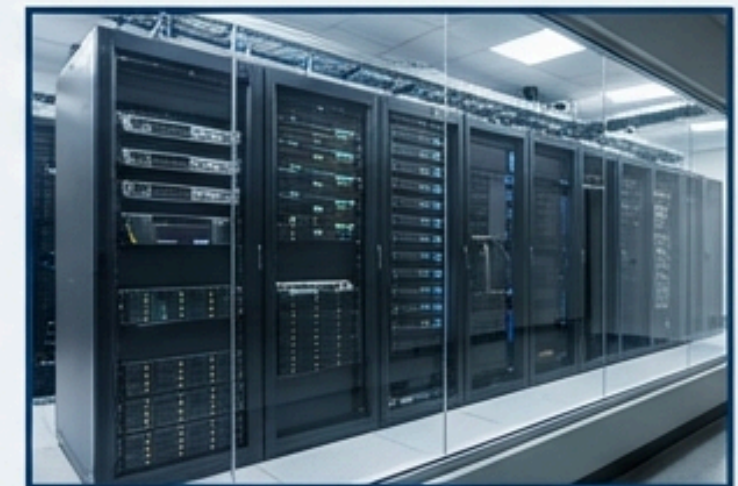
Public Parks



Senior Centers



Utilities Offices



Data Centers



# Fragmented systems create security vulnerabilities and operational inefficiencies.

Traditional, on-premise solutions struggle to keep pace with the demands of a modern city, leading to:

## Security Gaps

Multiple, disconnected systems make it impossible to enforce consistent security standards across all buildings.

## High Maintenance Costs

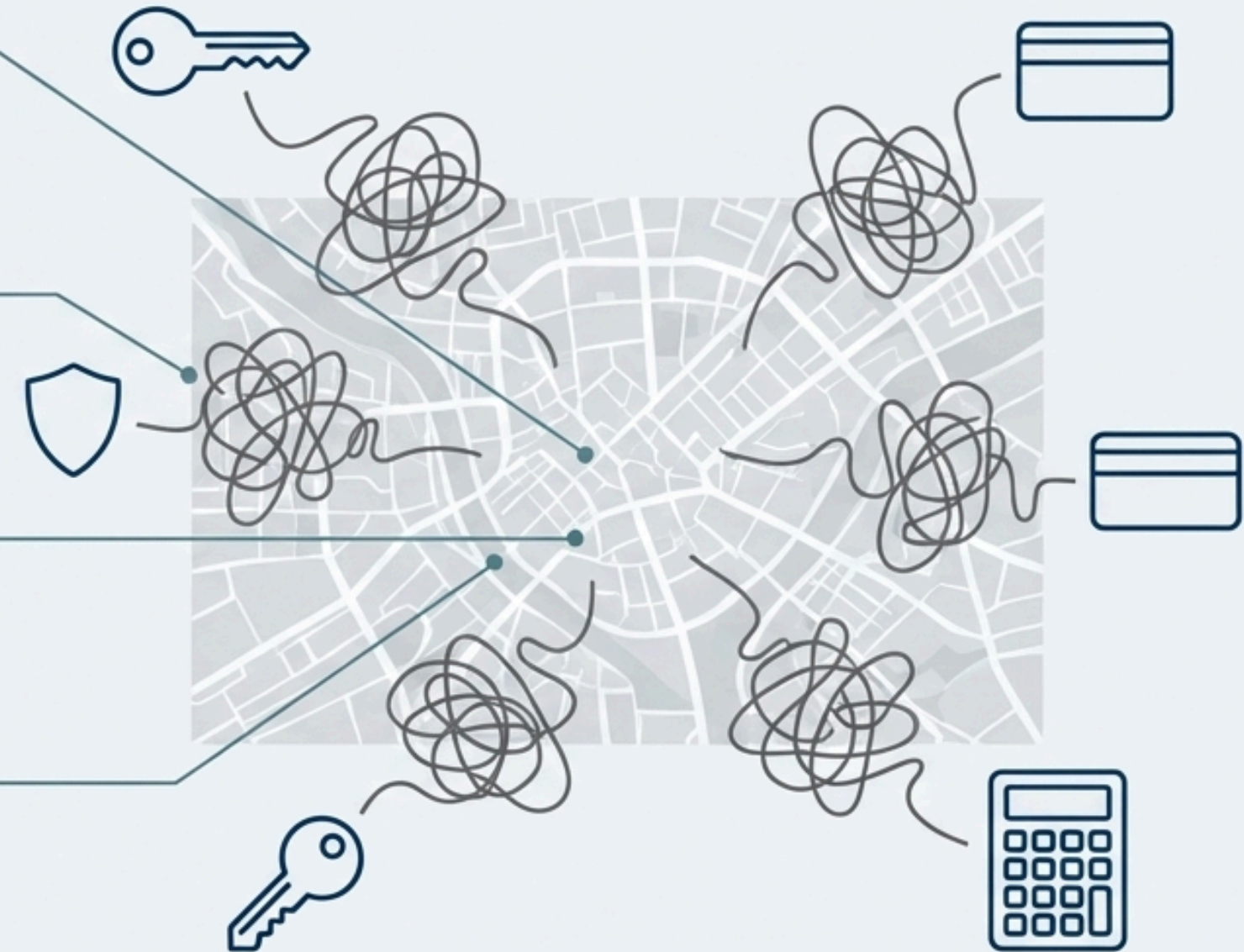
Reliance on physical on-site servers and complex manual maintenance drains budgets and IT resources.

## Lack of Central Oversight

Without a single dashboard, real-time monitoring and emergency response are slow and uncoordinated.

## Poor User Experience

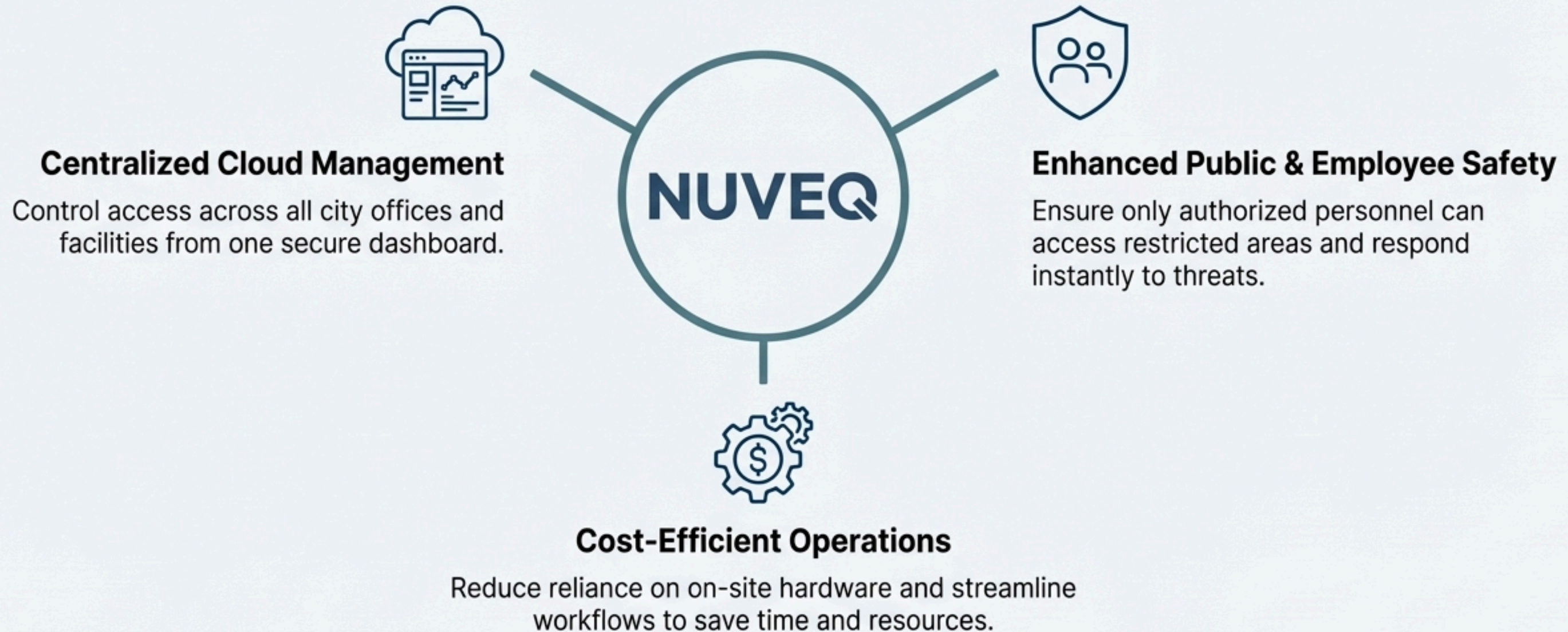
Cumbersome processes for employees, contractors, and the public lead to frustration and lost time.





# NUVEQ provides a unified platform designed for the unique needs of local government.

We replace complexity with a single, state-of-the-art solution built on three core pillars:

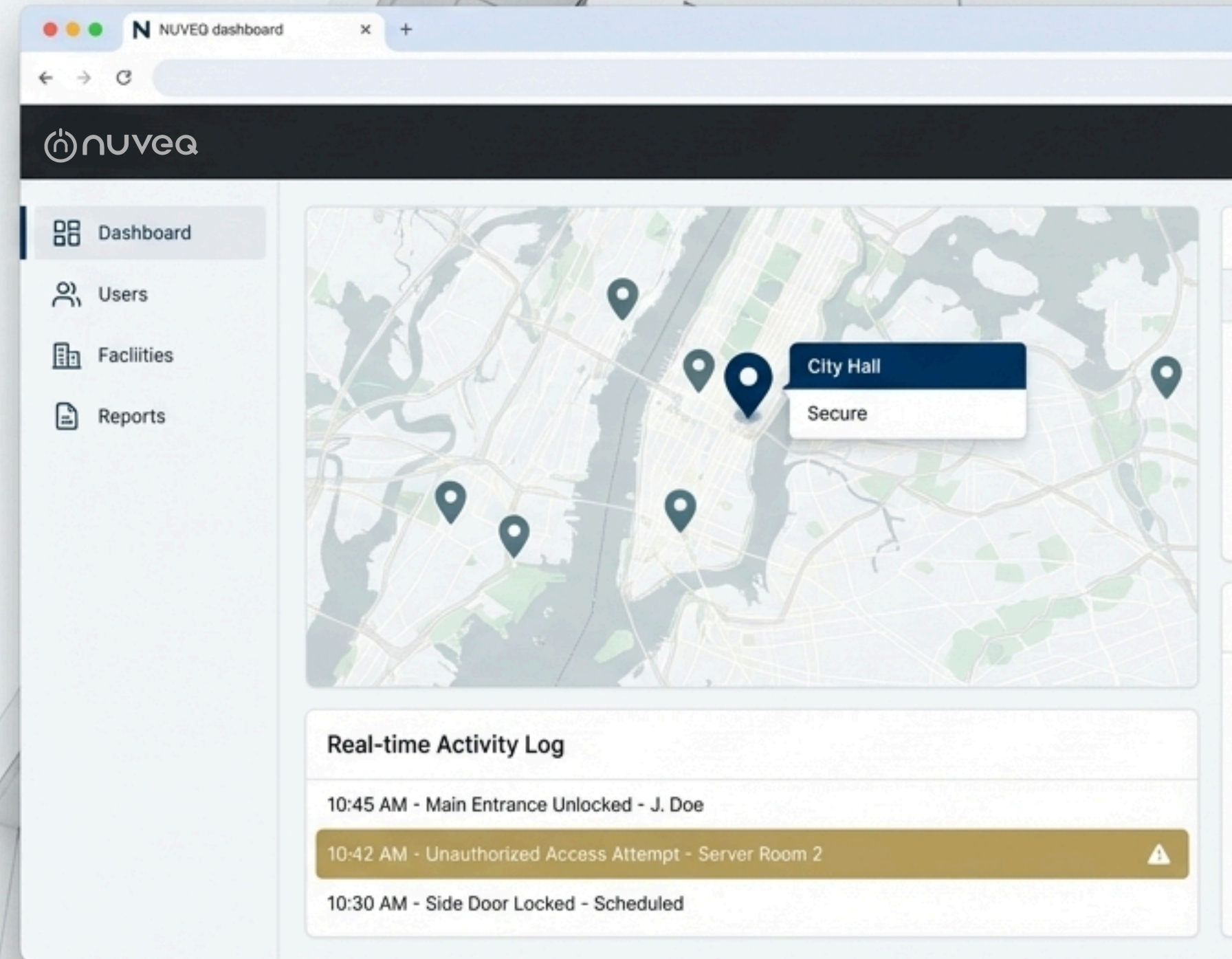




# Control every facility from one secure, centralized dashboard.

The NUVEQ Cloud Management Platform is the heart of your security infrastructure. Built on the **Google ULTRA SECURE Cloud Platform**, it allows you to:

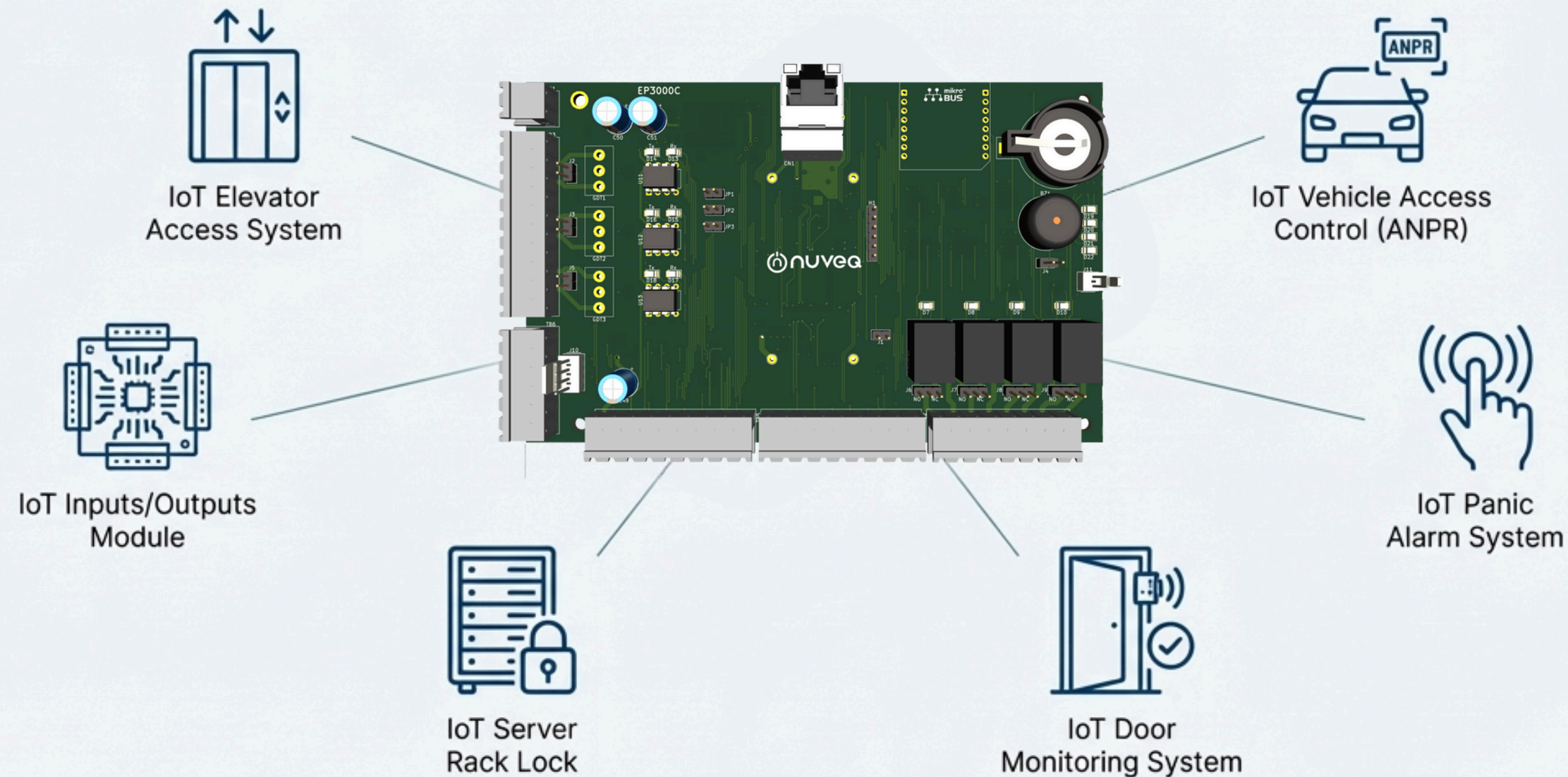
- **Manage Globally, Act Locally:** Oversee all locations remotely, locking or unlocking individual doors or entire premises as needed.
- **Automate Schedules:** Set up automatic locking and unlocking schedules to minimize manual intervention and ensure consistent security.
- **Scale Effortlessly:** Add new facilities—from a new library to a temporary event space—without costly hardware expansion.





# Intelligent IoT controllers connect every access point to the cloud.





Our family of Smart IoT Controllers are the secure link between your physical hardware and the cloud platform, ensuring reliability and real-time communication. This ecosystem includes specialized modules for:

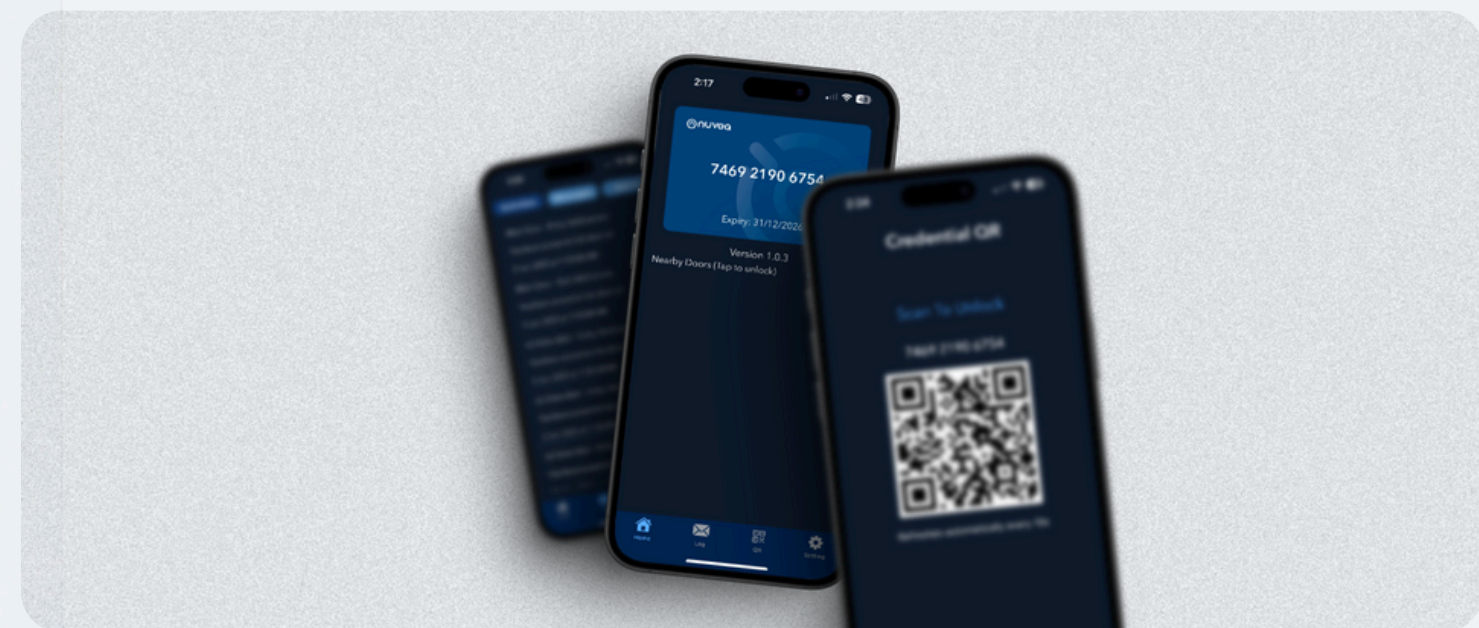
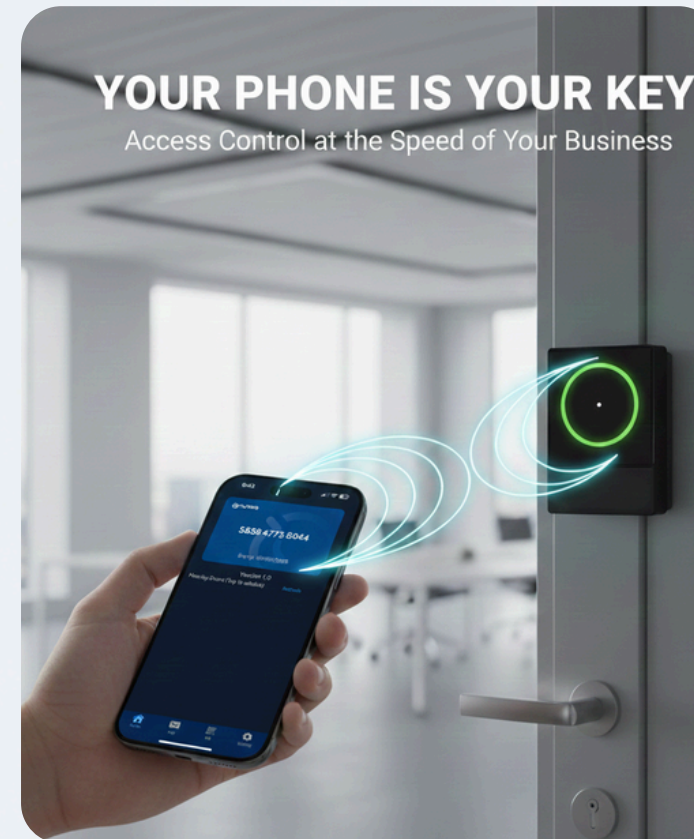




# Modern credentials and smart readers provide flexible, secure access.

Provide seamless access for employees, contractors, and the public with a range of modern, secure options. Our hardware supports:

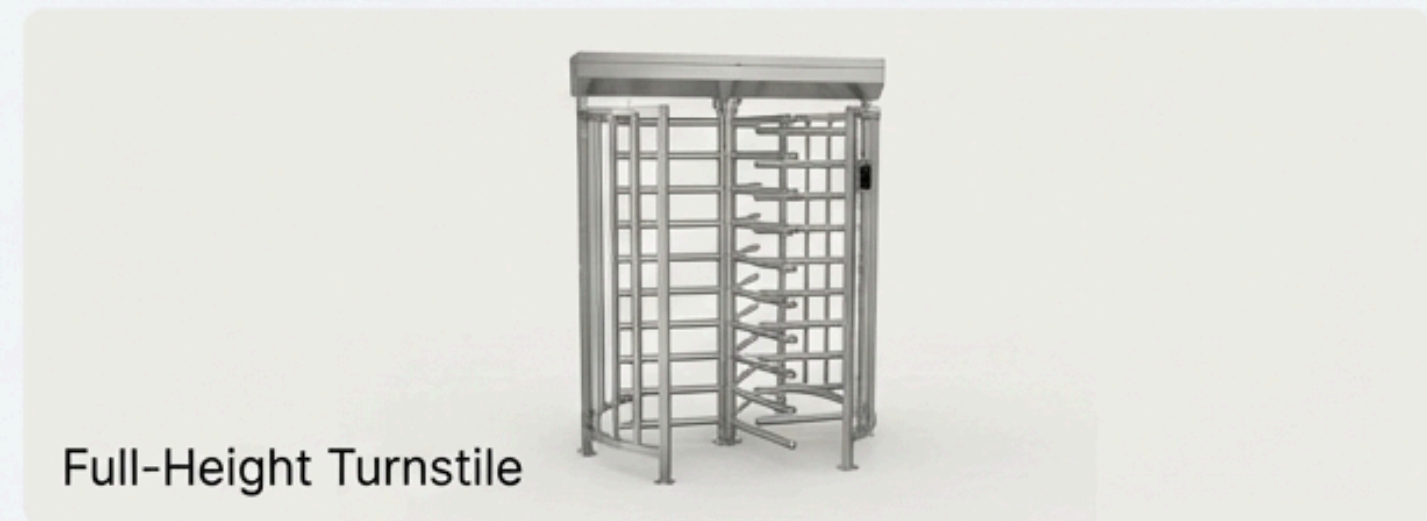
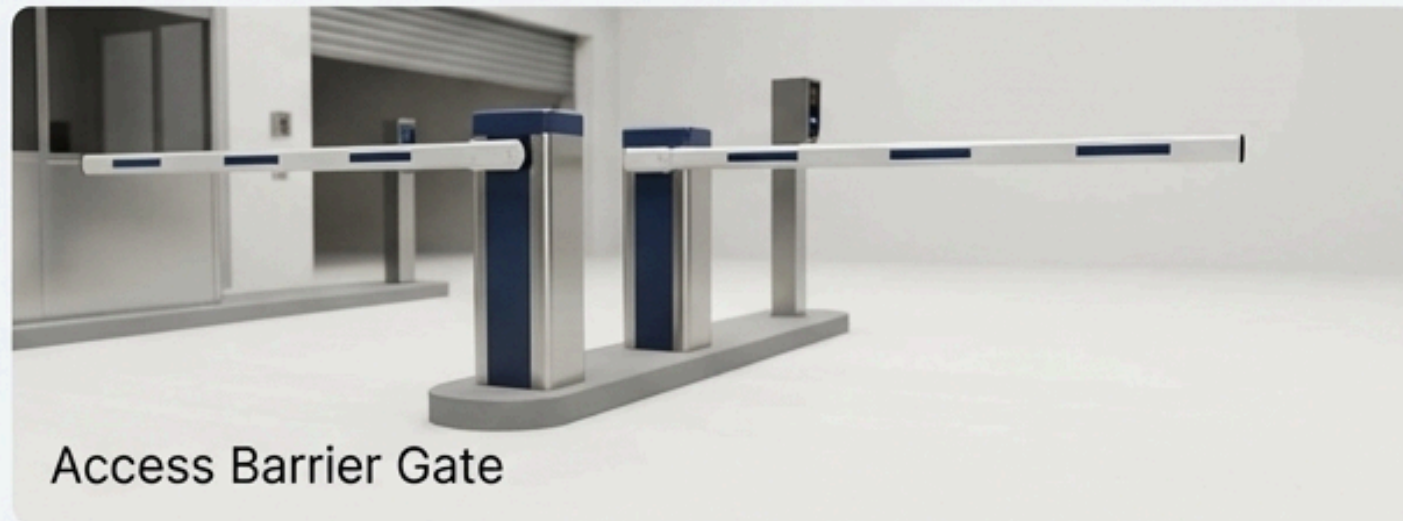
-  **Mobile Credentials:** Unlock doors with a single tap of a smartphone using our Mydigital ID.
-  **Multi-format Readers:** A single reader accepts multiple formats: BLE (Bluetooth), NFC, and QR codes for visitor passes.
-  **AI Biometrics Recognition:** For high-security areas, deploy advanced indoor and outdoor (IK10-rated) face recognition terminals.
-  **Encrypted NFC Cards:** For users who still require a physical credential, our encrypted cards offer enhanced security.





# Secure perimeters and manage public flow with integrated physical barriers.

Extend cloud-based control to your building's perimeter, parking entrances, and high-traffic internal areas with our robust line of security gates and turnstiles.





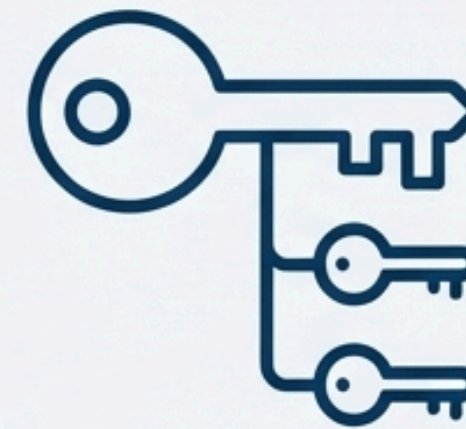
# Streamline public access and secure sensitive areas with granular controls.

Our features are purpose-built to solve common municipal challenges:



## Feature: Visitor Management Integration

**Benefit:** Simplify how citizens and vendors check in. Enable pre-registered appointments, issue digital QR-based passes, and reduce reception wait times while maintaining a full visitor log.



## Feature: Access Groups & Role-Based Permissions

**Benefit:** Ensure sensitive areas—like archives, council chambers, or IT server rooms—are protected at all times, while giving employees and contractors the exact access they need, when they need it.



# Enhance emergency preparedness and response capabilities across all facilities.

NUVEQ's platform provides tools to protect people and property during critical events:



## Feature: Emergency Lockdown

**Benefit:** Instantly secure all or select doors across one or multiple facilities from the central dashboard or mobile app in response to a threat.



## Feature: Fire Alarm Integration

**Benefit:** Automatically unlock designated emergency exit routes upon a fire alarm trigger, ensuring safe evacuation.



## Feature: Real-time Monitoring & Intrusion Alerts

**Benefit:** Receive instant notifications of any unauthorized access attempts or security breaches, enabling rapid response.



# The result is a safer, more efficient, and future-proof city infrastructure.

## Key Benefit 1: Streamlined Operations

- ✓ Effectively oversee all facilities from a single dashboard.
- ✓ Save time by sending temporary digital keys to vendors and visitors.
- ✓ Reduce manual workload with system integrations and automations.

## Key Benefit 2: Uncompromising Security

- ✓ Enforce consistent security standards across all buildings.
- ✓ Implement advanced measures like two-factor authentication and anti-passback.
- ✓ Ensure system uptime with offline capability during network failure.

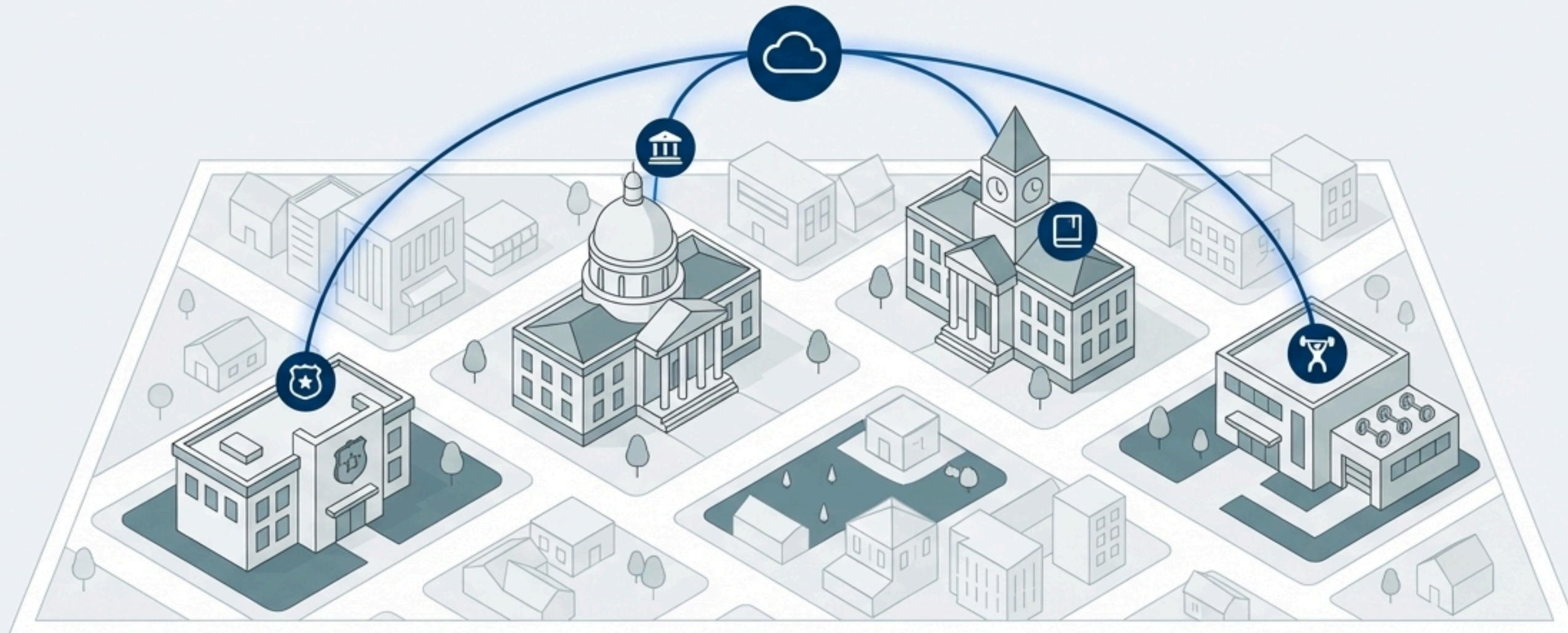
## Key Benefit 3: Future-Proof Investment

- ✓ Receive limitless system improvements via over-the-air (OTA) updates.
- ✓ Prevent vulnerabilities with a constantly evolving, modern platform.
- ✓ Integrate with future technologies using our robust developer API.



# A scalable solution tailored to every facility, from City Hall to community parks.

NUVEQ's flexible architecture allows you to apply the right level of security to each unique environment, all managed under one unified system.





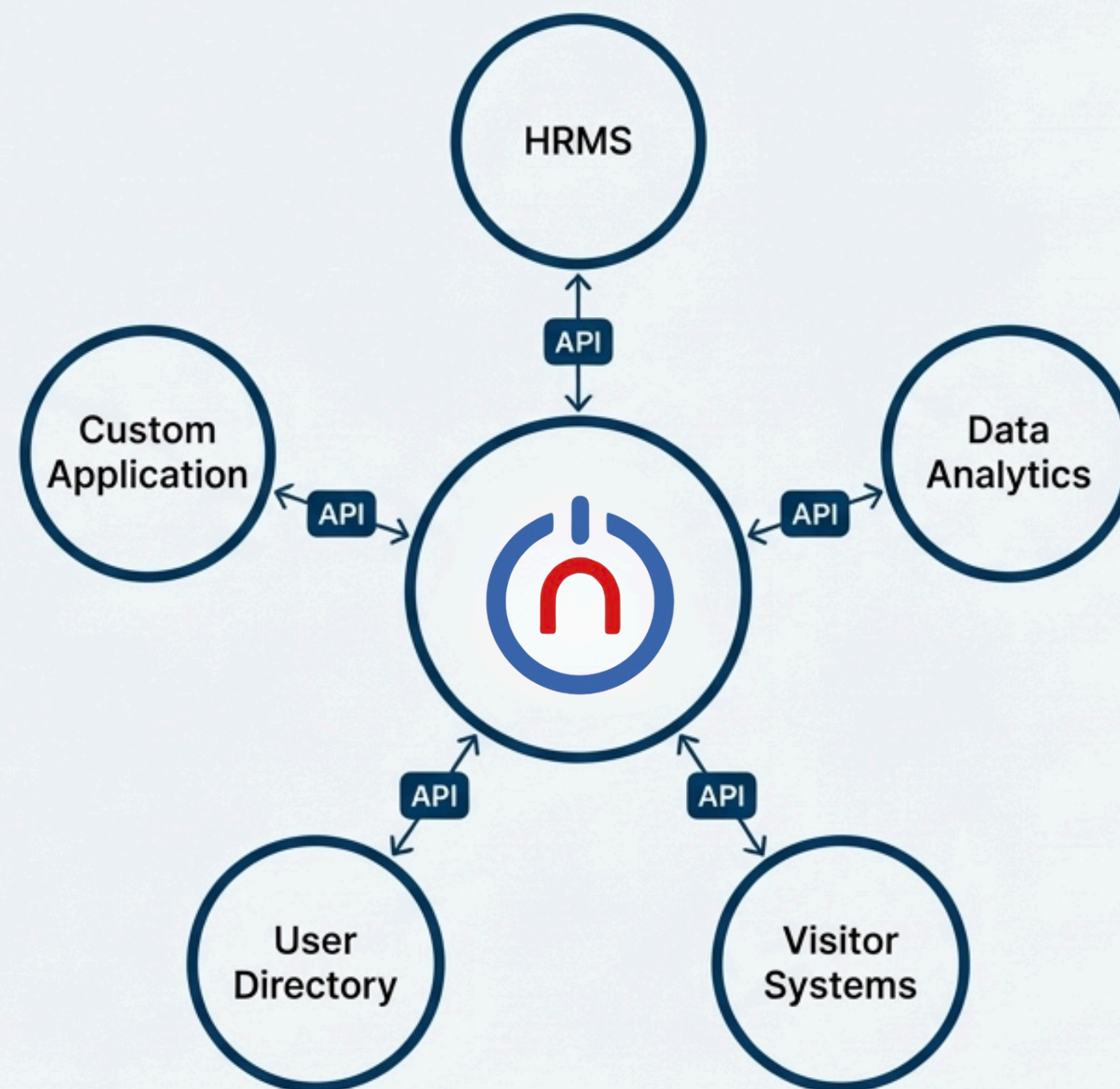
# Synchronize and expand with your existing technology stack.

NUVEQ is designed to be a central part of your city's technology ecosystem, not another silo.

**Connect and Sync:** Minimize security threats by connecting NUVEQ with your existing user directories to keep information up-to-date across all platforms.

**Integrate with Enterprise Software:** Enhance efficiency by integrating NUVEQ with HRMS, data analytics tools, and other essential software.

**Custom Development:** Utilize our Developer API to build customized integrations with your preferred software solutions to streamline processes.





# Take the first step towards a more secure and efficient city.

Modernize your city's security infrastructure with a partner that understands the unique challenges of local government. Contact us today to learn more about NUVE's cloud-based access control system and how it can be tailored to your municipality's needs.



## Request a Personalized Demo

See the NUVEQ platform in action, tailored to your specific operational challenges.



## Contact Our Experts

Discuss your project requirements, technical questions, and integration needs with a solution specialist.



## Become a Partner

For security integrators and dealers interested in offering NUVEQ solutions.

**NUVEQ SDN BHD | [sales@nuveq.net](mailto:sales@nuveq.net) | +603 9131 0918**

29, Jalan BS 7, Taman Bukit Segar, 43200 Cheras, Selangor, Malaysia.