

Quick Guide

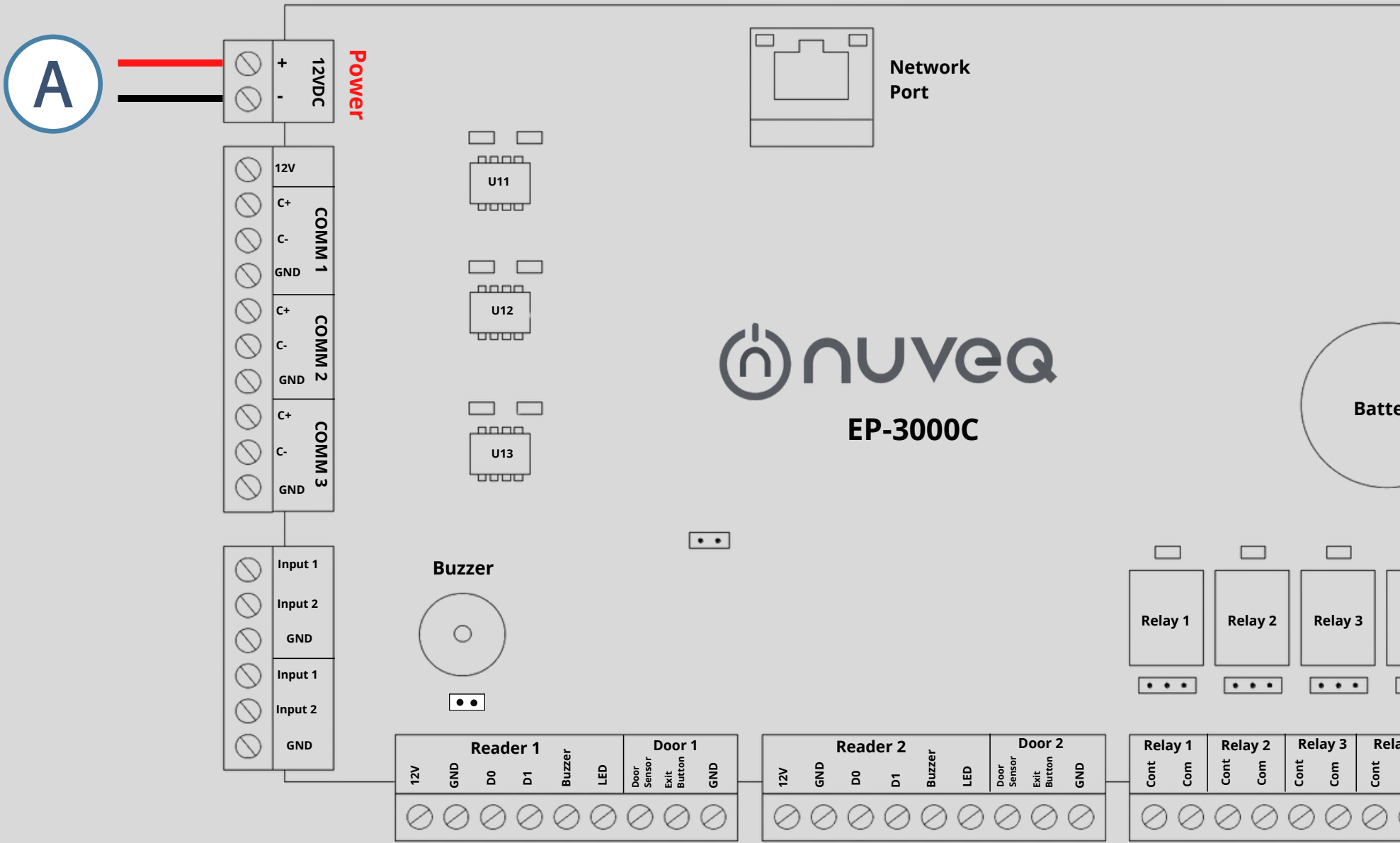
EP-3000C IoT Controller



www.nuveq.net



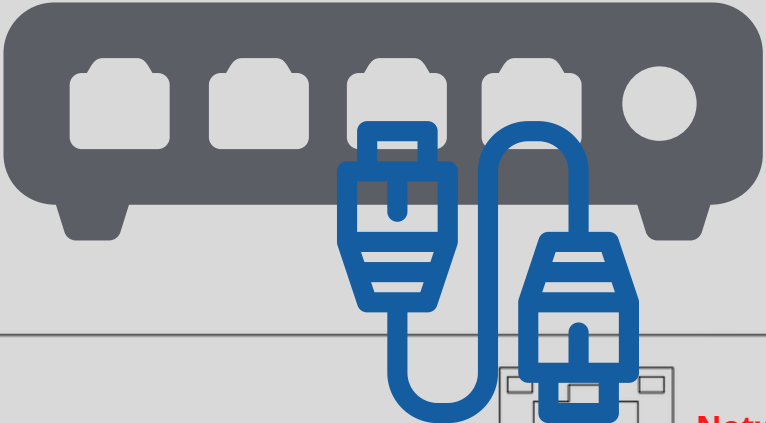
1. Power Connection



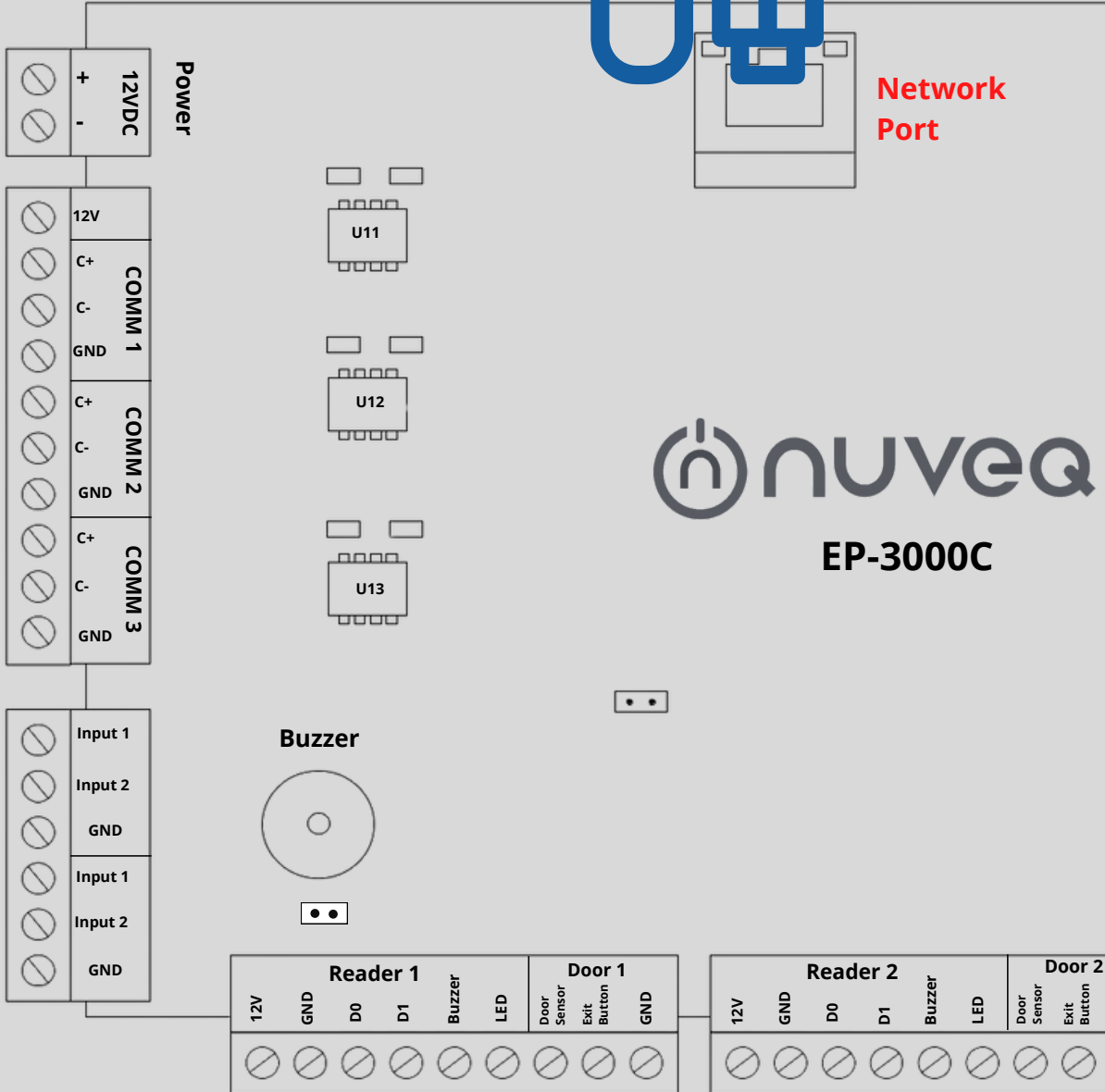
A

DC INPUT - Use included 12 VDC, 3 Amp input. It is recommended to use 18/2 wire.

2. Network Connection/Account Setup



Network - A live Internet connection is required to program and access the cloud management portal.



3. Cloud Portal Registration



1. Login to your account at <https://nuveq.cloud/login>
2. Enter the email and click Submit
3. Select Account and Submit
4. Enter Password, wait for OTP
5. Enter OTP

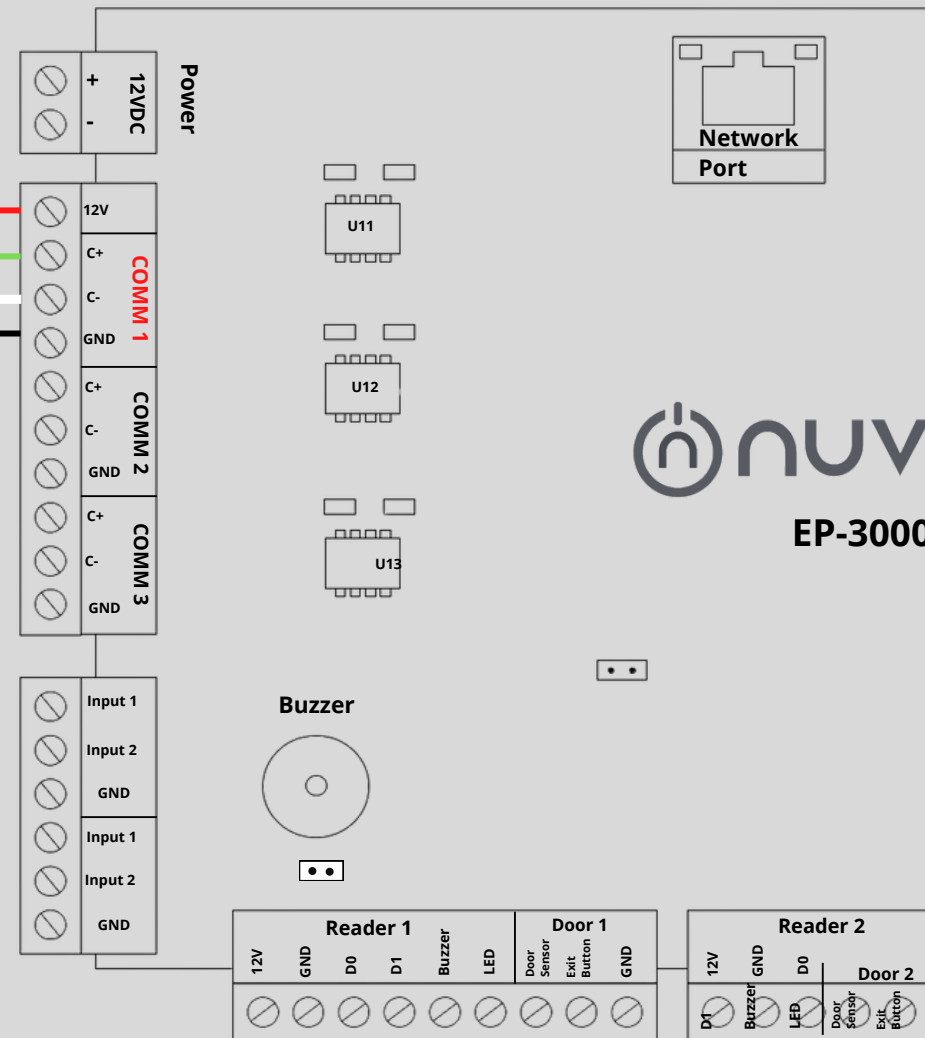
4. BLE Reader Connection

Card Reader



Bluetooth Reader Address

- Door 1 Entry - No Jumper
- Door 1 Exit - Jumper 1
- Door 2 Entry - Jumper 2
- Door 2 Exit - Jumper 1 & 2



If you plan to use the onboard single door controller, ensure system power is not connected during wiring.

BLE Reader - The main reader is mounted at the door with a 22/5 or 22/6 wire ran to the door controller. Wire the reader to the controller as shown above. Be sure to check polarity and voltage prior to powering the cloud node.

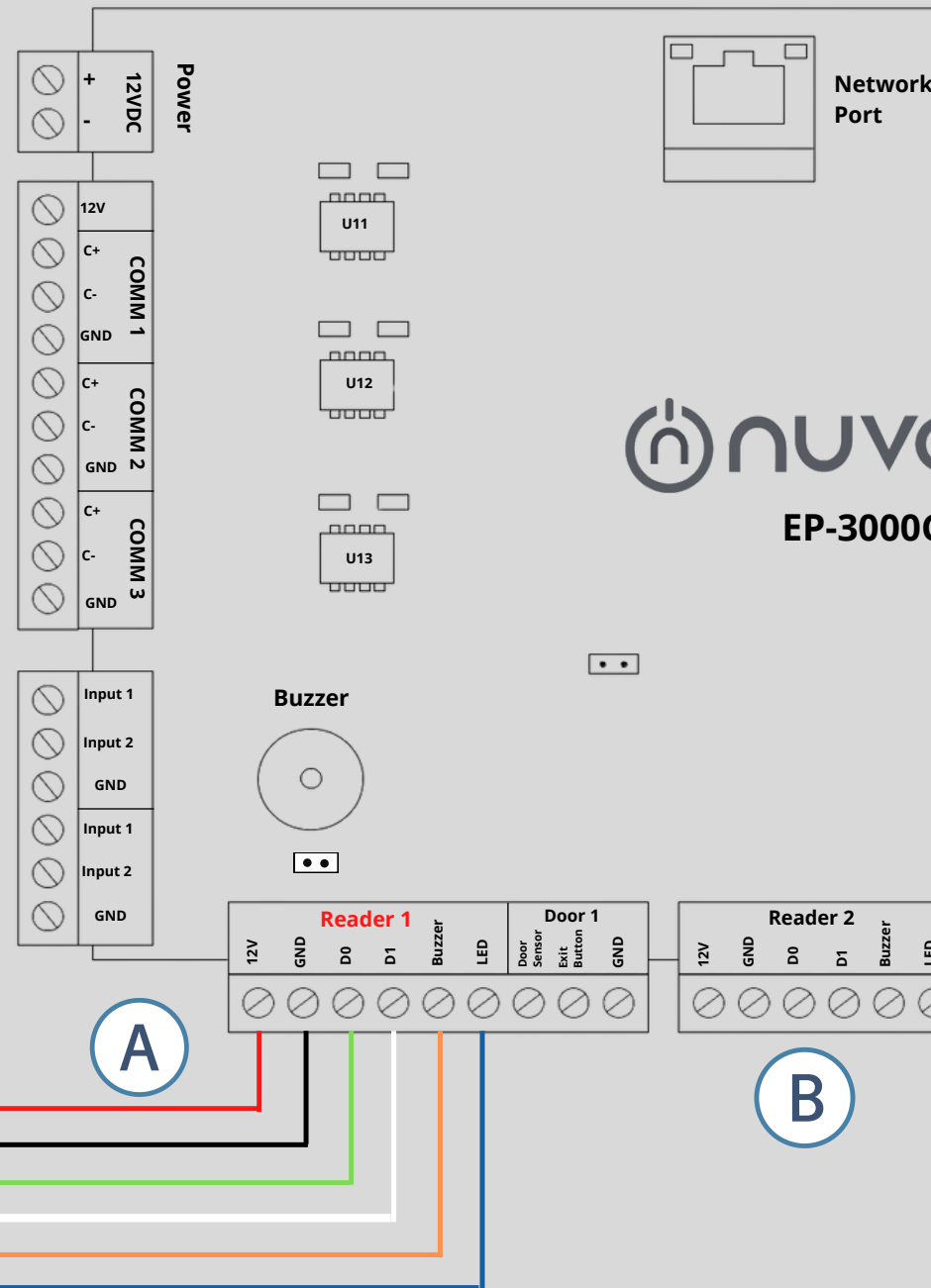
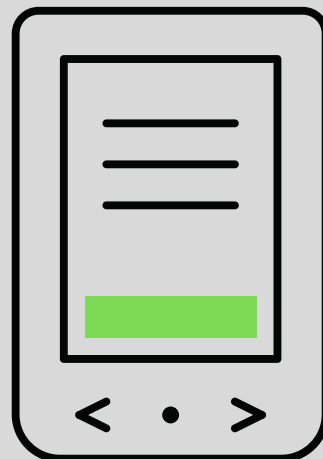
5. Weigand Reader Connection

! If you plan to use the onboard single door controller, ensure system power is not connected during wiring.

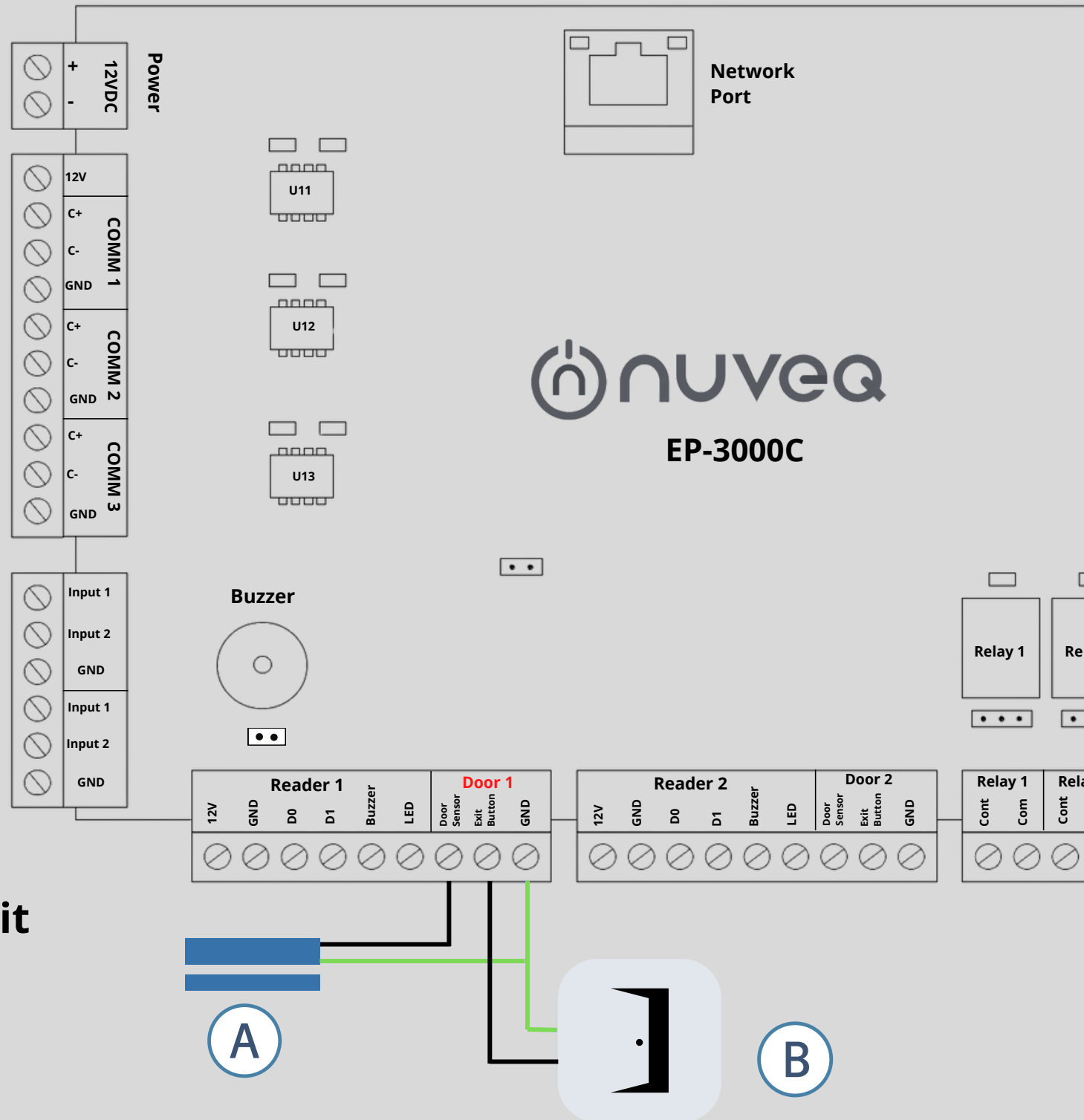
A **Main Reader** - The main reader is mounted at the door with a 22/5 or 22/6 wire ran to the door controller. Wire the reader to the controller as shown above. Be sure to check polarity and voltage prior to powering the cloud node.

B **Secondary Reader**

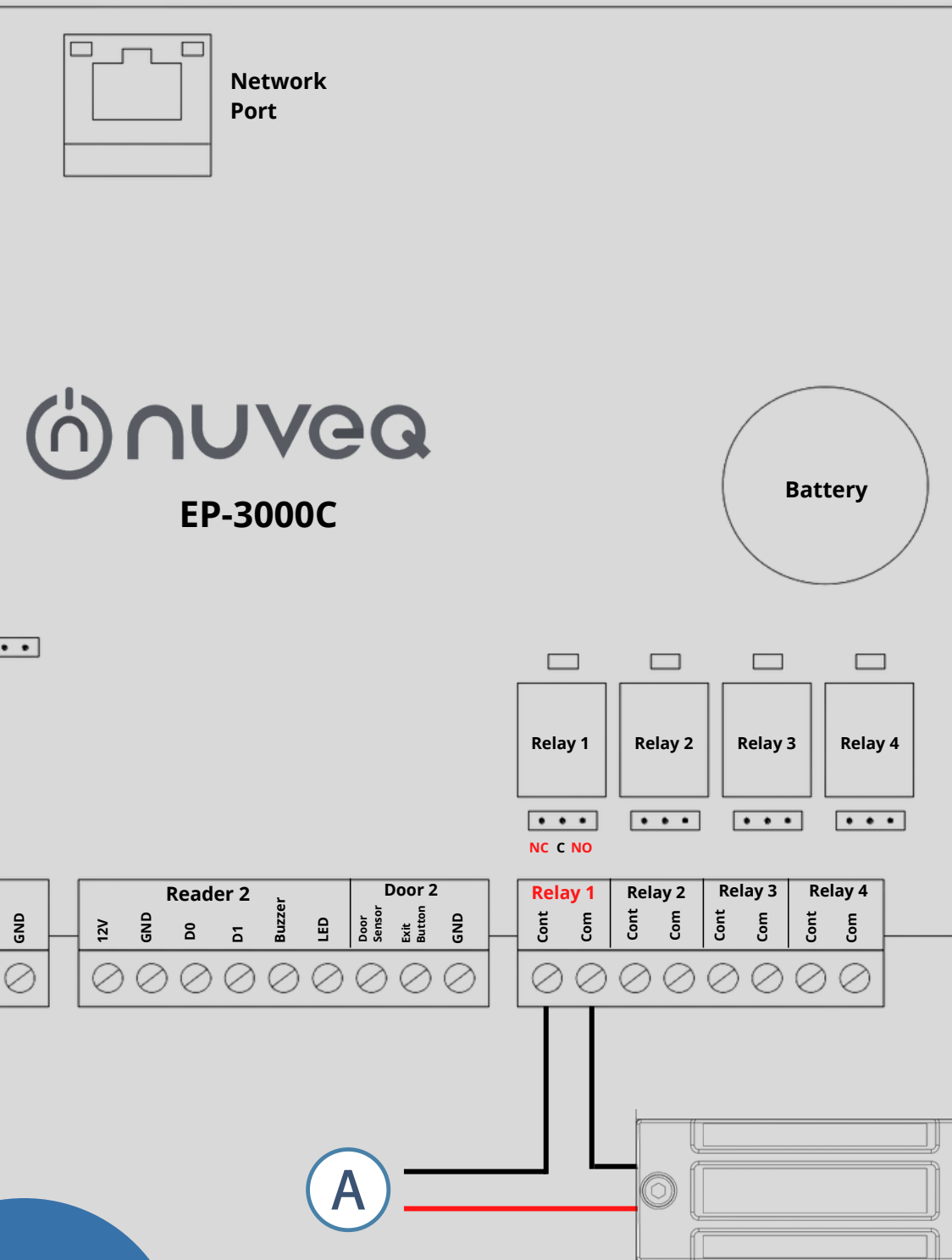
Card Reader



6. DSP & Request for Exit Connection



7. Locking Relay



A Power 12VDC, 1A

NC - Used for maglocks (or strikes in fail-safe configuration).

NO - Used for strikes in fail-secure configuration



NUVEQ SDN BHD

Thank you



+603-91310918



support@nuveq.net



www.nuveq.net